

# WHAT WE DO @ DAXI S.A.



## Track Equipment

(New, used, re-engineered)

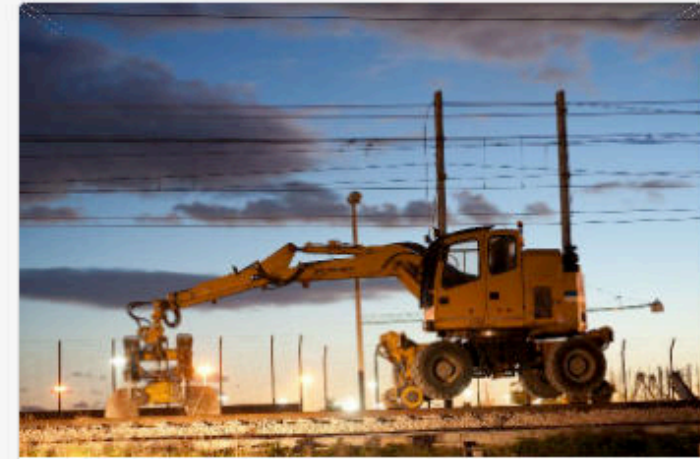
- Rails (from 33 to 60kg per metre)
- Sleepers (wooden, concrete, steel, other)
- Turnouts, switches, crossings, turntables
- Fastenings, bolts, fishplates
- Private and public rail sidings
- Work bases



## Rolling Stock

(VPI services, overhauls, refurbishments)

- Passenger transport (1st & 2nd class, sleeper coaches, restoration wagons, VIP, presidential)
- Cargo transport (flatbed wagons, bulk wagons, tank wagons, ballast wagons, custom wagons)
- Wheelsets, couplers, brakes, lights
- Leasing, rental, and project finance solutions
- Asbestos removal on old wagons



## Trackwork Equipment

(New, used, re-engineered)

- Fully manual track-work equipment
- Engine-powered track-work equipment
- Shunting locomotives (diesel, electric)
- Multi-purpose rail vehicles
- Cranes with rail access capabilities
- Extensive range of trucks for rail works



**Concrete Mixer for use in tunnel**





Shot on BV9100  
Powered by Blackview





**Shot on BV9100**  
Powered by Blackview



03.09.2010 13:37

